

Illuminate every journey with precision and style

● E-Rikshaw ● E-Scooty ● Three Wheeler



Lighting the **Path** to **Innovation**

At Tanishk Manufacturing Industries, we are dedicated to pioneering the future of automotive lighting. Our commitment is rooted in a history of innovation that spans over a decade, during which we have mastered the art of creating high-performance, energy-efficient lighting solutions for a variety of vehicles.

Our products not only illuminate the road ahead but also enhance the aesthetics of your vehicle, making every journey both safer and more stylish.

Delve into the specifics of our product range which includes meticulously designed tail lights, vibrant indicator lights, and essential parking lights for e-rickshaws, three-wheelers, and electric scooters.

Each product is engineered with the latest technology to offer superior brightness and longevity, significantly reducing the need for frequent replacements.

Explore how our lighting solutions are tailored to withstand various weather conditions and road challenges, ensuring a reliable and uninterrupted performance that sets new standards in the automotive lighting industry.



E-Rikshaw Lights

Explore our robust selection of E-Rickshaw Lights designed to enhance visibility and safety on the road. Our lights are built for durability and performance, ensuring that each journey is illuminated with precision. Whether you're navigating busy streets or dimly lit areas, our lights provide the reliability you need for a safe ride.



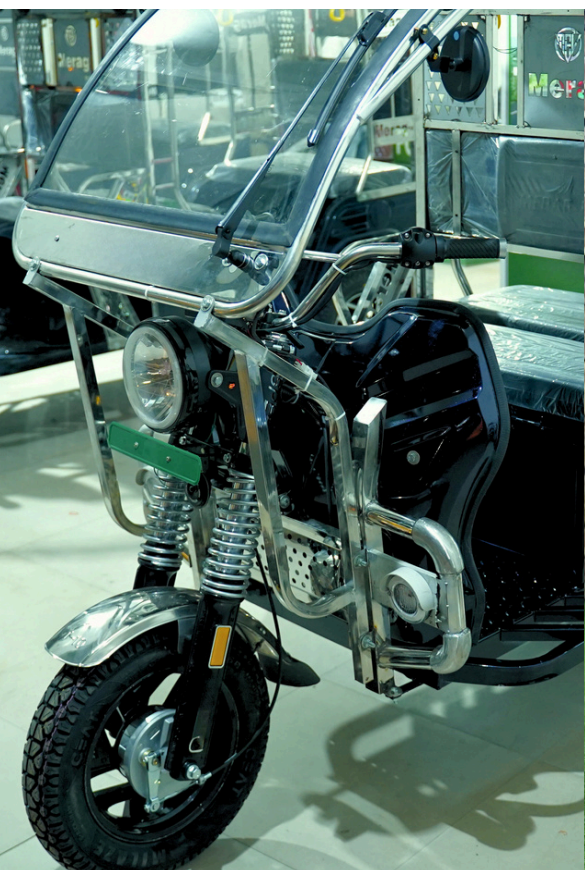
E-Scooty: Lights & Plastic Parts

Our E-Scooty category offers not only advanced lighting solutions but also high-quality plastic parts to equip your scooter for both functionality and style. From sleek headlights to durable body parts, our products ensure your scooty stands out while offering practical features that enhance your daily commute.



Three Wheeler Lights

Enhance your three-wheeler's safety and style with Tanishk Manufacturing Industries' durable lighting solutions. Our lights provide exceptional visibility, withstand harsh conditions, and combine aesthetic appeal with functionality, improving your ride's safety standards.



E-Rikshaw Lights

Enhance your ride with our durable E-Rickshaw Lights for better visibility and safety, ensuring reliable illumination in busy or dimly lit areas.

Square Reverse Light -
16 LED



Colour
Clear Lens

Square Rear Position Stop Lamp
and Rear Direction Lamp (LED
Type) 12 LED



Head Lamp Assembly-Plastic Lens consisting of Driving and
Passing Beam



TAC No.
CN 6807

Part No.
0206DD

Colour
Clear Lens



Rear Combination Lamp Assembly
consisting of Rear Position lamp,
Stop Lamp, Direction Indicator
Lamp & Reverse Lamp (Vertical &
Horizontal Mounting) 21 LED

TAC No.
CP 6530

Part No.
020621

Colour
Amber,Red & Clear



Rear Position Stop Lamp, Reverse
Lamp, Rear Direction lamp, (Bulb
Type) L 5

TAC No.
CR 6546

Part No.
TM 202

Colour
Red



Front Direction Indicator
Lamp L5 (Bulb Type)

TAC No.
CR 6548

Part No.
TM 201

Colour
Amber



Rear Combination Lamp
Assembly consisting of Rear
Position lamp and Stop Lamp
18 LED

TAC No.
CK 6752

Part No.
020618

Colour
Red



Reverse Lamp Assembly
18 LED

TAC No.
CK 6750

Part No.
020618-03

Colour
Clear



Direction Indicator Lamp
Assembly 18 LED

TAC No.
CK 6748

Part No.
020618-02

Colour
Amber



E-Rikshaw Lights

Enhance your ride with our durable E-Rickshaw Lights for better visibility and safety, ensuring reliable illumination in busy or dimly lit areas.



Reversing Lamp
9 LED

TAC No.
CP 6203

Part No.
020609

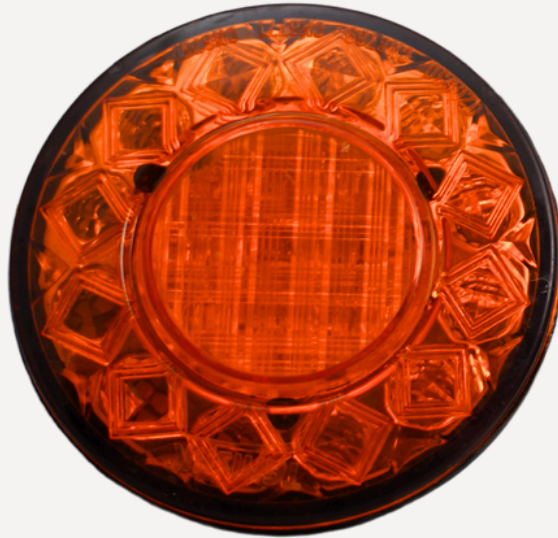


Direction Indicator Lamp Assembly 30 LED

TAC No.
CN 6769

Part No.
020630

Colour
Amber



Front Combination Lamp
Assembly consisting of Front
Position Lamp & Direction
Indicator Lamp 9 LED

TAC No.
CP 6197

Part No.
020609

Colour
Amber



Rear Combination Lamp
consisting of Rear Position
Lamp and Stop Lamp 30 LED

TAC No.
CN 6767

Part No.
020630

Colour
Red



Reversing Lamp
30 LED

TAC No.
CN 6771

Part No.
020630

Colour
Clear



Square Direction Light 16 LED

Colour
Amber



Front Combination Lamp
consisting of front position lamp
and Direction Indicator 33 LED

TAC No.
CL 6087

Part No.
020633

Colour
Clear



Direction Indicator Lamp
Assembly 33 LED

TAC No.
CL 6073

Part No.
020633

Colour
Amber



Rear Combination lamp
Assembly consisting of Rear
Position Lamp and Stop Lamp
33 LED

TAC No.
CL 6080

Part No.
020633

Colour
Red



E-Rikshaw Lights

Enhance your ride with our durable E-Rickshaw Lights for better visibility and safety, ensuring reliable illumination in busy or dimly lit areas.

Reverse Lamp Assembly
33 LED

TAC No.
CL 6075

Part No.
020633

Colour
Clear



Cabin Light



Colour
Clear

Rear Combination Lamp Assembly consisting of Rear Position lamp, Stop Lamp, Direction Indicator Lamp & Reverse Lamp (Vertical & Horizontal Mounting)



Rear Registration Plate(Mark)
Illumination Lamp

TAC No.
CL 6100

Part No.
020606

Colour
Clear



Front Position Light 6LED iCAT
Approved

TAC No.
CN 6763

Part No.
0206F6



Front Position Light Bulb



Colour
Clear lens

Rear Position Stop Lamp,
Reverse Lamp, Rear Direction
lamp, (Bulb Type) Rectangle
Glass



Head Lamp Assembly-Plastic
Lens,consisting of Driving
Beam,Passing Beam in LED 113
mm



Scroll Top Tail Light



Colour
Red

E-Rikshaw Lights

Enhance your ride with our durable E-Rickshaw Lights for better visibility and safety, ensuring reliable illumination in busy or dimly lit areas.



Front Position Light
15LED



Rear Direction Indicator Lamp
9 LED



TAC No.
CP 6201

Part No.
020609



Front Direction Light 6LED



TAC No.
CN 6765

Part No.
0206F6



Front Grill Light



Side & Rear Round Retro Reflecting Device



TAC No.
CR 6550

Part No.
RR102

Colour
White / Amber / Red



Direction Indicator with
Reflector



Head Light Assembly DRL with
Cap



TAC No.
CN 6807

Part No.
0206DD



Rear Rectangle Retro Reflector
Device



Rear C-Type Light Direction /
Reverse/ Stop



Headlight DRL iCAT Approved



TAC No.
CN 6807

Part No.
0206DD



Square DRL Light



E-Scooty: Lights & Plastic Parts

Our E-Scooty category features stylish and functional products, including advanced lighting and durable plastic parts, enhancing both appearance and daily commuting experience.

Number Plate Light



Colour
Clear Lens

Rear Dust Cover



Product No.
TM 10/20

Floor Board Side Trim LH/RH



Product No.
TM 10

Meter Case Garnish



Product No.
TM 10

Head Light Assembly DRL Rainbow Colour



Dust Cover Front



Product No.
TM 10/20

Diggi



Product No.
TM 10/20

Chassi Dust Cover



Product No.
TM 10

Floorboard



Product No.
TM 10

Rear Tyre Cover



Product No.
TM 10/20

Toolbox/Inner Chest



Product No.
TM 10/20

E-Scooty: Lights & Plastic Parts

Our E-Scooty category features stylish and functional products, including advanced lighting and durable plastic parts, enhancing both appearance and daily commuting experience.



Seat



Product No.
TM 10/20

Rear Tail Light Upper Cover



Colour
Clear Lens

Side Panel Lower (Lh & Rh)



Product No.
TM 10

Front Upper Panel



Product No.
TM 10

Front Mudguard



Product No.
TM 10

Meter Case Visor



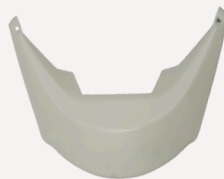
Product No.
TM 10/20

Side Panel Lh/Rh



Product No.
TM 10/20

Rear Tail Light Lower Cover



Product No.
TM 10/20

Front Visor



Product No.
TM 10

E-Scooty: Lights & Plastic Parts

Our E-Scooty category features stylish and functional products, including advanced lighting and durable plastic parts, enhancing both appearance and daily commuting experience.

Front Big Nose



Product No.
TM 10/20

Head Lamp Assembly-Plastic Lens consisting of Driving Beam and Passing Beam

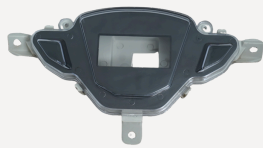


Product No.
TM 10

TAC No.
CP 7029

Part No.
0206H1

Meter Case



Colour
Clear Lens

Rear Combination lamp assembly consisting of Rear Position Lamp, Stop Lamp, Direction Lamp, Direction Indicator Lamp



Product No.
TM 10

TAC No.
CP 7027

Part No.
TMI 04

Front Lower Garnish



Chain Cover Set/Swing Arm



Product No.
TM 10/20

Front Combination Lamp Assembly consisting of Front Position Lamp & Direction Indicator Lamp



Product No.
TM 10

TAC No.
CP 7025

Part No.
TMI 02

Headlight Garnish



Product No.
TM 10

Charging Socket Cover



Product No.
TM 10/20

E-Scooty: Lights & Plastic Parts

Our E-Scooty category features stylish and functional products, including advanced lighting and durable plastic parts, enhancing both appearance and daily commuting experience.



Front Upper Panel Small



Product No.
TM 20

Front Visor



Product No.
TM 20

Head Lamp Assembly Plastic Lens Consisting of Driving and Passing Beam and Front Position Lamp



Product No.
TM 20

Front Lower Garnish



Product No.
TM 20

Front Combination Lamp Assembly Consisting of Front Position and Direction Indication Lamp



Product No.
TM 20

Front Visor Garnish



Product No.
TM 20

Front Upper Panel Garnish



Product No.
TM 20

Front Upper Panel



Product No.
TM 20

Front Mudguard Big



Product No.
TM 10/20

3 Wheeler Lights

Enhance your three-wheeler's safety and style with Tanishk Manufacturing Industries' durable lights, providing excellent visibility and combining aesthetics with functionality for improved safety.



Rear Position Stop Lamp, Reverse Lamp, Rear Direction lamp, (Bulb Type) L5

TAC No. CR 6546
Part No. TM 202
Colour Red



Front Direction Indicator Lamp L5 (Bulb Type)

TAC No. CR 6548
Part No. TM 201
Colour Amber



Rear Combination Lamp Assembly Consisting of Rear position, Stop, Direction Indicator and Reverse Lamps



Rear Position Stop Lamp, Reverse Lamp, Rear Direction lamp, (Bulb Type) BS4/BS6

Colour Red



Head Lamp Assembly Plastic Lens Consisting of Driving and Passing Beam



Front Direction Light



Front Position and Direction Indicator Lamp 2 Stroke

Colour Amber



Front Position and Direction Lamp Assembly- GC 1000/ RE 205

Colour Clear & Amber



Rear Position Stop Lamp, Reverse Lamp, Rear Direction lamp, (Bulb Type) 2 Stroke

Colour Amber, White & Red



Front Position and Direction Lamp Assembly BS4/BS6

Colour Amber & Clear

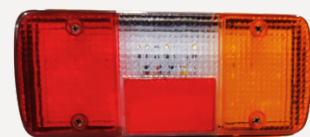


Rear Position Stop Lamp, Reverse Lamp, Rear Direction lamp, (Bulb Type) Round Glass

Colour Amber, Red & Clear



Rear Position Stop Lamp, Reverse Lamp, Rear Direction lamp, (Bulb Type) Rectangle Glass



Why Choose Us?

At Tanishk Manufacturer, we pride ourselves on being a trusted partner for high-quality automotive lighting and plastic components. Here's why our customers choose us:

Unmatched Quality

Quality is at the core of everything we do. Our products undergo rigorous testing and quality checks to ensure they meet the highest industry standards for performance, durability, and safety.

Competitive Pricing

We understand the importance of value for money. That's why we offer high-quality products at competitive prices, ensuring you get the best return on your investment.

Industry Expertise

With years of experience in the automotive industry, we bring deep knowledge and technical expertise to the design and manufacturing of E-Rickshaw lights, three-wheeler lights, E-Scooty lights, and plastic parts.

Reliability and Timely Delivery

We know that time is crucial for our customers. With our efficient production processes and reliable logistics partners, we ensure that your orders are delivered on time, every time.

Innovative Solutions

We are constantly innovating to stay ahead of industry trends. Our team leverages the latest technology to develop cutting-edge products that enhance the functionality and appeal of electric and three-wheeler vehicles.

Sustainable Practices

As a responsible manufacturer, we are committed to environmental sustainability. We use eco-friendly materials and processes to minimize our impact on the environment and support the future of green transportation.

Customer-Centric Approach

We put our customers first, offering personalized solutions that cater to specific needs and requirements. From customized designs to flexible delivery options, we are committed to your satisfaction.

Comprehensive Support

From product selection to after-sales support, our dedicated customer service team is here to assist you at every step. We're just a call or email away whenever you need us.

TANISHK



ISO 9001:2015

Contact

Gaurav Jain
+91 981 065 5026

Y.P Jain
+91 926 698 0814

🏠 Unit 1
J-90, Sector 2,
DSIIDC, Bawana, Delhi - 110039

Unit 2
J-71, Sector 2,
DSIIDC, Bawana, Delhi - 110039

✉️ gaurav@tanishkmfgindustries.com

🌐 www.tanishkmfgindustries.com

